

GREEN FILM

Rating system for sustainable film production



Edition 02 - 2022

What is Green Film?

A **tool** designed to guide audiovisual producers to work in an environmentally friendly way. Via this instrument, Film Fund, Film Commission, broadcaster or other entities can encourage producers to work in a more environmentally sustainable manner.

A **brand** that certifies environmental sustainability for audiovisual productions.

A **network** of entities that work in a coordinated manner to implement strategies and tools for sustainable filming and to collectively create sustainability-related training activities.

How does Green Film work?

Before the shooting

Using a *checklist*, producers declare which environmental sustainability criteria listed in the GREEN FILM rating system they wish to comply with during the shooting.

During the shooting

- The production undertakes to comply with the criteria adopted.
- The Verifying Body verifies whether the criteria are actually being complied with.

After the shooting

- The Verifying Body verifies compliance with the environmental sustainability criteria declared by the production prior to starting the shooting.
- If the verification is positive, the production receives the GREEN FILM environmental sustainability certification by the Certifying Body.

Why adopt Green Film?

- It fosters the green approach in an industrial sector that has a strong power of communication.
- It allows to be part of a Network working on the implementation of good practices and on the organization of coordinated training activities.
- It is easy to use and has already been tested by various film and TV productions.
- It is a shared scheme that facilitates producers in going green when operating in different regions and in the case of co-productions.

Find out more on www.green.film

PRE-REQUISITES

Planning sustainability

Purpose

Plan beforehand the practical and streamlined application of the sustainability criteria to be adopted, using simple and concrete information, in order to reduce environmental impact to a minimum but without slowing down the crew's work. Plan beforehand production mobilization so as to optimise transportation and therefore reduce its environmental and economic impact.

PRE-REQUISITES: PLANNING SUSTAINABILITY		Check
PR1	Sustainability Plan- Pre-requisite	✓
PR2	Transport Optimization Plan- Pre-requisite	✓

Criterion description:

PR1 SUSTAINABILITY PLAN

Requirements

All actions must be completed **before starting the shoot**.

Nomination of a person responsible for the application of the protocol ("Green Film Manager") with at least two years of experience in the field of environmental consulting.

Drafting of a **Sustainability Plan** describing the criteria chosen and adopted to make the Audiovisual Work environmentally-sustainable. The Sustainability Plan will be transmitted via e-mail to:

- the Certifying Body;
- the Appointed Party (if any);
- the chosen Verifying Body;
- each member of the production (crew and staff members).

The *Green Film Manager* must hold a *kick-off meeting* which must be attended by everyone involved in the actions to be implemented to protect the environment, and written minutes of the meeting must be drawn up.

Observations and suggestions

The Sustainability Plan should include, for each criterion, precise reference as to the actions to be taken on each set. It also should include a context analysis that highlights the fragile/critical aspects of the environment that characterise the area in which shooting will take place (such as protected areas, historical town centres, urban areas with heavy traffic, etc.) and the impact that the activities will have on these critical aspects, in order to indicate adequate solutions in the plan aimed at reducing this impact, both during shooting and once shooting is completed.

The main aim of the Plan is to involve all of the staff and crew members in implementing best environmental practices.

The *kick-off meeting* with the heads of department is to be seen as an opportunity for training. At this meeting specific information is to be provided to each individual department: for example, drivers transporting people and goods should know in detail the plan for optimising transport and the need to use public transport whenever possible.

The Certifying Body and/or Appointed Party, if any, may send the Plan also to the Public Bodies involved, and in particular to the Municipal Boards, for information and/or collaboration purposes.

Verification procedure

Document verification. Produce the originals or copies of the following:

- Sustainability Plan (before starting the shoot);
- nomination and curriculum vitae of the *Green Film Manager* (before starting the shoot);
- e-mails sent to crew and staff members with the Plan attached;
- minutes of the *kick-off meeting*.

On-set verification. The on-set verification conducted by the Verifying Body is aimed at assessing the crew and staff members' effective knowledge of the Plan, by asking questions and observing behaviour.

PR2

TRANSPORT OPTIMIZATION PLAN

Requirements

Before starting the shoot, nominate a *Mobility Manager* who will draft a Transport Optimization Plan concerning the technical vehicles present on-set and the personal transport vehicles both on the set and for transfer of people from the set to accommodation facilities and vice versa.

The Transport Optimization Plan must therefore contain the following indications:

- number and type of vehicles used;
- an estimate of the number of trips to be made by each vehicle, divided into single journeys (e.g. itineraries, distances, quantity of fuel used, type of fuel);
- an estimate of the number of occupants per vehicle, divided into single journeys.

During the shoot, the contents of the Plan must be kept in consideration and updated in the event of new demands, recording the data related to each trip.

Observations and suggestions

The aim is to use as few vehicles as possible and to optimise transport in an environmentally-sustainable way, in particular by preferring the use of environmentally-friendly vehicles, concentrating the movement of people so as to fully occupy the vehicles available and rationalising travel itineraries to avoid repeated or unnecessary journeys, possibly highlighting the impact of shooting on local traffic, especially if carried out in urban areas that are already congested.

Verification procedure

Document verification. Produce the originals or copies of the following:

- nomination of the appointed *Mobility Manager* (before starting the shoot);
- Transport Optimization Plan (before starting the shoot);
- logging of the data regarding fuel consumption, distance travelled and number of people travelling in each vehicle.

On-set verification. The purpose of the on-set verification conducted by the Verifying Body is to record the vehicles actually being used.

CRITERIA

*Sustainability
in practice*

Each Audiovisual Work is based upon specific artistic and organisational choices that influence its production methods. The scoring system makes it possible to evaluate and select the specific actions that can be undertaken on the basis of the characteristics of each individual production.

In this way, everyone can find their own way to a more environmentally sustainable production.

The adoption of the various criteria leads to the awarding of a specific score. For the purposes of certification, each Audiovisual Work must comply with the Pre-requisites, which are therefore essential and are not awarded any points. The Audiovisual Work is awarded certification if it reaches a score of no less than twenty (20) points, without prejudice to the essential nature of the Pre-requisites.

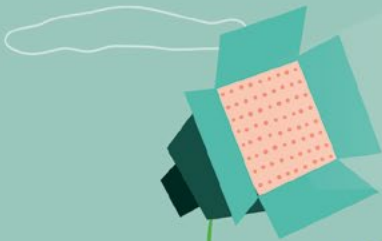
If the Production Company is EMAS registered, the minimum score to be achieved with the Criteria is reduced by five (5) points.

Please refer to the Green Film Verification Regulations for details of the certification procedure.

Scope of the Criteria:

	CRITERION A: <i>Energy saving</i>	10	
	CRITERION B: <i>Transport and accommodation</i>	14	
	CRITERION C: <i>Catering</i>	18	
	CRITERION D: <i>Material selection</i>	24	
	CRITERION E: <i>Waste management</i>	29	
	CRITERION F: <i>Communication</i>	32	

Energy saving



Purpose

To ensure an efficient reduction of the environmental impact of the Audiovisual Work, limiting as much as possible polluting and climate-changing emissions and the waste of energy resources. To rationalise the use of resources while also favouring economic savings.

CRITERION A: ENERGY SAVING		Points
A1	Temporary connections to the power distribution grid	3
A2	Green Power	3
A3	LED lighting	3

Criterion description:

A1

TEMPORARY CONNECTIONS TO THE POWER DISTRIBUTION GRID

Requirements

Use only power supplied via temporary connections to the power distribution grid, contacting local suppliers, without using portable generators.

Observations and suggestions

A temporary grid connection involves a fixed cost upon agreeing the contract and variable costs calculated on actual consumption in kilowatts per hour, which costs much less than using portable generators. After each location inspection, the competent energy supplier in the area hosting the shoot must be contacted in order to verify the possibility of a temporary connection.

Verification procedure

Document verification. Produce the originals or copies of the following:

- contracts entered into with the power supplier(s);
- the related invoices;
- a summary table of all sets and the corresponding references of power supply used in each one (supplier, contract).

On-set verification. The purpose of the on-set verification conducted by the Verifying Body is to make sure that no portable generators are being used.

A2**GREEN POWER****Requirements***Option 1:*

To enter into contracts with energy suppliers that exclusively provide energy produced from renewable sources, with reference only to power utilities activated directly for the Audiovisual Work.

Option 2:

To produce energy directly from renewable sources, for example, by using stand-alone photovoltaic kits to recharge batteries.

Observations and suggestions

In both cases to demonstrate that the power used is 100% from renewable sources, to use suppliers with a “Guarantee of Origin” certificate or to obtain a signed statement from the supplier regarding the renewability of all of the energy sources used to produce the electricity supplied to the Audiovisual Work.

Verification procedure

Document verification.

Option 1:

Produce the originals or copies of the following:

- supply contract(s);
- power supplier’s statement indicating the provenance of the renewable sources of all of the electricity supplied (under the contract); and/or the
- “Guarantee of Origin” certificate of the supply.

Option 2:

Produce the originals or copies of the invoices for the purchase or rental of the production kits used and photographic evidence of their use.

On-set verification. The purpose of the on-set verification conducted by the Verifying Body is to verify the presence of the production kits used.

A3

LED LIGHTING

Requirements

To avoid the use of incandescent, halogen or fluorescent lighting systems.
To use only lighting with LED technology.

Observations and suggestions

Incandescent, halogen and fluorescent lamp lighting systems consume much more electricity than LED lamps, and therefore negatively affect environmental sustainability and costs.

Verification procedure

Document verification. Produce the originals or copies of the invoices for the purchase or rental of the lighting systems used on which is indicated that they are LED technology-based, and photographic evidence of their use.

On-set verification. The purpose of the on-set verification conducted by the Verifying Body is to take note of the lighting systems actually used and to ensure that only permitted lighting systems are used.

Transport and accommodation



Purpose

To reduce polluting emissions deriving from travelling by motorised transport, through the selection of the vehicles to be used and a rational organisation of transfers, thus enabling a reduction of fuel consumption costs.

To reduce the environmental impact of the crew's accommodation, by choosing accommodation close to the shooting locations and with certified sustainable management.

CRITERION B: TRANSPORT AND ACCOMMODATION		Points
B1	Euro 5 vehicles	1
B2	Euro 6, hybrid, methane, LPG and/or electric vehicles	4
B3	Accommodation: within 10km from the set	4
B4	Accommodation: certified accommodation facilities <i>EMAS or EU Ecolabel: 3 points</i> <i>ISO 14001 or other type I certifications (ISO 14024): 2 points</i>	max 3

Criterion description:

B1 EURO 5 VEHICLES

Requirements

To exclusively use Euro 5 certified vehicles or vehicles similar to Euro 5 if this standard is not applicable.

Verification procedure

Document verification. Produce the originals or copies of the following:

- vehicle registration documents;
- rental contracts, if any.

On-set verification. The purpose of the on-set verification conducted by the Verifying Body is to take note of the vehicles actually used and to ensure that vehicles that are not allowed (Euro 4 or lower) are not being used.

B2**EURO 6, HYBRID, METHANE, LPG AND/OR ELECTRIC VEHICLES****Requirements**

To exclusively use Euro 6, hybrid, methane, LPG and/or electric vehicles. This criterion refers only to passenger transportation.

Observations and suggestions

Criteria B1 and B2 may be combined in the case where vehicles intended for passenger transportation meet criterion B2 and the remainder meet criterion B1, in which case the relevant points are added together.

Verification procedure

Document verification. Produce the originals or copies of the following:

- a list of the vehicles found- Euro 6, methane, LPG and/or electric;
- vehicle registration documents;
- rental contracts, if any.

On-set verification. The purpose of the on-set verification conducted by the Verifying Body is to take note of the vehicles actually used and ensure that vehicles that are not allowed (Euro 5 or lower) are not being used.

B3**ACCOMMODATION: WITHIN 10KM FROM THE SET****Requirements**

To select accommodation within a 10 km radius of the set, except when the sets are used for only one day of shooting. If there is no accommodation within 10 km of the set, to choose the accommodation closest to the set.

Observations and suggestions

The choice of accommodation impacts on vehicle transfers and consequently on polluting emissions and fuel costs; for this reason, it is important to choose accommodation that is as close as possible to shooting locations. Arranging accommodation nearby also helps simplify transport organisation in terms of time management and reducing the work-pace of the drivers involved.

Verification procedure

Document verification. Produce the original or copies of the following:

- the list of accommodation facilities of the crew;
- the corresponding invoices (or similar proof) for the accommodation;
- the graphic evidence of the distance of accommodation from the set (example: maps/satellite photographs with distances indicated)

On-set verification. The purpose of the on-set verification conducted by the Verifying Body is to check the truthfulness of the declarations made, through the direct acquisition of information and data.

B4

ACCOMMODATION: CERTIFIED ACCOMMODATION FACILITIES

Requirements

To stay in sustainable facilities for at least 50% of the overnight stays, choosing from among the following options:

Option 1:

Accommodation with EMAS or EU Ecolabel certification;

Option 2:

Accommodation with ISO 14001 or other type I certifications (ISO 14024).

Observations and suggestions

Find out which accommodation facilities are certified and any other information on the [EU Ecolabel](#).*

Find out which hotels are registered and any other information on the [EMAS Regulation](#).**

Verification procedure

Document verification. Produce the original or copies of the following:

- the list of hotels used;
- their certifications;
- a table summarising the number of nights stayed overall by the production;
- the invoices for accommodation.

On-set verification. The purpose of the on-set verification conducted by the Verifying Body is to check the truthfulness of the declarations made, through the direct acquisition of information and data.

Catering



Purpose

To guarantee crew and staff members food that is both healthy and of good quality, yet that respects the environment by reducing, as far as possible, the production of waste from catering operations and CO2 emissions originating from organisational choices that are costly both from an environmental and an economic perspective.

CRITERION C: CATERING		Points
C1	Drinking water <i>Local water supply network: 4 points</i> <i>Free-standing water dispensers: 3 points</i>	max 4
C2	Supply of meals <i>Restaurants: 4 points</i> <i>Catering without lunch-boxes: 1 point</i>	max 4
C3	Reusable tableware	2
C4	Hot beverages on set	3

Criterion description:

C1 DRINKING WATER

Requirements

The provisioning of drinking water and of cold beverages on set must be done without using plastic bottles. When beverages are provided using cups (or other similar containers), the cups must not be disposable. For drinking water it is possible to:

Option 1: exclusively use the local water supply network;

Option 2: use free-standing water dispensers.

Observations and suggestions

The use of plastic water bottles and disposable cups produces waste on a daily basis, which needs to be disposed of in compliance with local waste differentiation laws that may vary depending on the location of the set. Avoiding such waste is an efficient environmental solution from both an economic and organisational perspective. Usually, the competent health authorities conduct constant monitoring of the area's water, guaranteeing the service's users the possibility of drinking potable water via taps and water-fountains; as an alternative, water can be dispensed using free-standing water dispensers that are, in any case, far more ecological than plastic bottles. The use of flasks or other personalised containers made of washable material by crew members is recommended. By respecting this criterion, it is also possible to indirectly reduce the use of motorised transport, both for the purchase of bottles of water and plastic cups and for the disposal of waste, thus reducing the consequences of CO2 emissions and fuel consumption.

Verification procedure

Document verification.

Option 1:

Produce the originals or copies of the following:

- a list of the sets used for shooting and of the corresponding local water network used for each set;
- the invoices for the purchase of flasks, washable cups or other non-disposable containers used to supply drinking water or a self-declaration stating that they have been previously purchased and reused for the production in question.

Option 1:

Produce the originals or copies of the following:

- the invoices for the purchase of free-standing water dispensers;
- the invoices for the purchase of flasks, washable cups or other non-disposable containers used to supply drinking water.

On-set verification. The purpose of the on-set verification conducted by the Verifying Body is aimed at ensuring that the water is not supplied in plastic bottles or disposable cups (or other similar containers).

C2**SUPPLY OF MEALS****Requirements**

To serve the main meal of the day to the crew, choose one of the following options.

Option 1:

To eat meals exclusively in restaurants.

Option 2:

To also or only use a catering or field kitchen service that does not make use of lunch-boxes but only of self-service distribution systems.

As an exception, a quick snack may be consumed on-set (such as, for example, sandwiches or similar) when the shoot envisages non-stop hours. It is understood that this exception cannot be applied for more than 30% of the total number of shooting days.

Observations and suggestions

Very often the catering service or field kitchen is provided by giving crew members individual portions of food to be eaten on-set (lunch-boxes), which leads to an increase in the production of waste. The key to meeting this criterion is therefore to eliminate lunch-boxes.

The restaurant option is more sustainable than the catering service because the use of reusable tableware is always guaranteed, and the handling of waste is the responsibility of the restaurateur.

Verification procedure**Option 1:**

Produce the originals or copies of the following:

- a list of the sets used for shooting and of the corresponding restaurants and/or of the private dwellings used for each set;
- the corresponding invoices of the restaurants.

Option 2:

Produce the originals or copies of the contract or agreement entered into with the catering service or field kitchen, clearly indicating that the meals will never be served in lunch-boxes.

On-set verification. The purpose of the on-set verification conducted by the Verifying Body is aimed at verifying that the meals are not served using individual lunch-boxes and, if necessary, at ascertaining that the exceptional use of snacks consumed on-set is within the permitted limit of 30% of the total shooting days.

C3

REUSABLE TABLEWARE

Requirements

When a catering service or field kitchen is used to serve meals and beverages, only reusable tableware must be used (plates, cutlery and glasses).

Observations and suggestions

The elimination of lunch-boxes for serving food is not enough to eliminate the problem of waste, because the catering service or field kitchen often includes the supply of disposable rather than reusable tableware.

Verification procedure

Document verification. When using a catering service or a field kitchen, produce a copy of the contract entered into with the service supplier that must indicate also the type of tableware they will use for distributing the food, with a prohibition on using disposable tableware.

On-set verification. The purpose of the on-set verification conducted by the Verifying Body is to ensure that disposable tableware is not used.

C4**HOT BEVERAGES ON-SET****Requirements**

Hot beverages on-set (coffee, tea, etc.) must be provided without the use of disposable cups and stirrers. Only use ground coffee.

Observations and suggestions

The snack bar service offered on-set often requires the use of disposable cups for tea or coffee: compliance with this criterion means significantly reducing the production of packaging.

Verification procedure.

Document verification. Produce the originals or copies of the invoices for the purchase of washable cups and stirrers (hard plastic or ceramic cups) and ground coffee.

On-set verification. The purpose of the on-set verification conducted by the Verifying Body is to ensure that only the permitted supplies are used.

CRITERION D

Material selection



Purpose

To use materials that respect the environment as far as possible, thus guaranteeing the well-being of both the locations and the people working on the set. To avoid wasting materials by finding efficient solutions for their reuse.

CRITERION D: MATERIAL SELECTION		Points
D1	Certified suppliers and products <i>EMAS or EU Ecolabel: 3 points</i> <i>ISO 14001 or other type I certifications (ISO 14024): 2 points</i>	max 3
D2	Recycled materials or materials deriving from reuse	1
D3	Reuse of scenery materials	2
D4	Paper-based communication	1

Criterion description:

D1

CERTIFIED SUPPLIERS AND PRODUCTS

Requirements

There are two options available for the construction of sets.

Option 1:

To use only EU Ecolabel certified paints or to contact at least one supplier of scenery materials that has EMAS certification.

Option 2:

To use only FSC and/or PEFC certified timber; only Blauer Engel or other type I certified paints (ISO 14024); or to contact at least one supplier of scenery materials that has ISO 14001 certification.

Observations and suggestions

The use of local suppliers is recommended, as well as paying particular attention to the procedures for the disposal of materials, especially paints and their containers.

Verification procedure.**Document verification:** *Option 1 and Option 2.*

For paints or wooden products, produce originals or copies of:

- a summary table of the supplies used to make the sets;
- the related invoices;
- the corresponding environmental certifications, among those required.

For certified suppliers, produce originals or copies of:

- the invoices of the suppliers of certified scenery material;
- the corresponding environmental certifications, among those required.

On-set verification. The purpose of the on-set verification activities conducted by the Verifying Body is to check the truthfulness of the declarations made, through the direct acquisition of information and data.

D2**RECYCLED MATERIALS OR MATERIALS DERIVING FROM REUSE****Requirements**

To work together with firms and associations that offer set materials, props or costumes that are recycled or being reused, entering into an agreement for their supply or lease.

Observations and suggestions

Recycling and reuse are cornerstones of environmental sustainability. The use of recycled or reused set materials, props or costumes can guarantee both ecological and economic savings. Compliance with the criterion does not depend on the quantity or the percentage of the recycled or reused set materials, props or costumes over the total amount of materials used by the Audiovisual Work.

Verification procedure.

Document verification. Produce the original or copies of the following:

- the invoices and/or contracts and/or transport documents and/or written agreements showing the use of recycled or reused scenery materials, props and costumes;
- in the case of recycled materials, proof of the recycled components (technical data sheets or similar);

- in the case of reused materials, evidence of previous use.

On-set verification. The purpose of the on-set verification conducted by the Verifying Body is to check the truthfulness of the declarations made, through the direct acquisition of information and data.

D3

REUSE OF SCENE MATERIALS

Requirements

At the end of a shoot, to make the reusable scenery materials, made specially for the Audiovisual Work, available for further use by other parties who should collect them, with the conclusion of an agreement with the parties providing for the transfer of these materials to them.

Observations and suggestions

At the end of a shoot, it will be necessary to decide what to do with materials that are still in good condition, favouring the 'virtuous cycle' of reuse and preventing them from becoming waste. To meet this criterion, only scenery materials made specifically by the Audiovisual Work to create a set (and therefore not the hiring of costumes or vehicles, for example) should be considered. Compliance with the criterion does not depend on the quantity or the percentage of the scenery materials transferred along the supply chain of reused materials over the total amount of materials used by the Audiovisual Work.

Verification procedure.

Document verification. Produce the originals or copies of the invoices and/or transport documents and/or receipts countersigned by the recipient attesting to the transfer of reusable props to parties that guarantee their reuse (should the pick-up not have occurred yet, produce a statement signed by the party in charge of the pick-up stating its commitment to the pick-up and the list of materials to be picked up).

On-set verification. The purpose of the on-set verification conducted by the Verifying Body is to check the truthfulness of the declarations made, through the direct acquisition of information and data.

D4

PAPER-BASED COMMUNICATION

Requirements

To reduce paper-based communication to a minimum for internal communications concerning daily agendas, journeys to be made with motorised vehicles and any other useful information to be communicated to the crew members, resorting to electronic communication as far as possible.

Observations and suggestions

In other cases where paper-based communication is indispensable, to use EU Ecolabel-certified paper or other type I labelling (ISO 14024).

Verification procedure.

Document verification. Produce the originals or copies of a digital statement of the internal notices sent electronically and a self-declaration of the exclusive use of electronic notices whenever possible.

On-set verification. The purpose of the on-set verification conducted by the Verifying Body is to ensure that only essential notices are sent using paper.

Waste management



Purpose

During the entire course of filming, to ensure the proper management of waste and to give priority to the recovery and recycling of materials rather than their disposal, hence further reducing the environmental impact of the Audiovisual Work.

CRITERION E: WASTE MANAGEMENT		Points
E1	Differentiated waste collection	4

Criterion description

E1

DIFFERENTIATED WASTE COLLECTION

Requirements

Implement differentiated waste collection on every set:

- equipping areas on-set and in the base camp with designated waste bins that bear clear instructions as to their use and are easily distinguishable;
- informing crew members in advance of the regulations in force concerning the disposal of waste;
- disposing of waste in accordance with the laws in force.

Verification procedure.

Document verification: supply photographic documentation that attests to the equipping of every set with differentiated waste disposal facilities; submit

the originals or copies of the contracts entered into with the firms that have collected the waste and their invoices.

On-set verification. The purpose of the on-set verification conducted by the Verifying Body is to:

- ensure the presence of differentiated waste disposal containers on every set;
- ensure that the containers are used correctly (by random sampling, checking whether waste is disposed of in compliance with the differentiated waste disposal methods locally in force).

Communication



Purpose

To promote and advertise the Audiovisual Work also through communication events that publicly disseminate the industry's adoption of good practices linked to sustainability. To increase the public's awareness of issues concerning environmental sustainability.

CRITERION F: COMMUNICATING SUSTAINABILITY		Points
F1	Communicating Sustainability <i>Press kit document : 1 point</i> <i>trailer/clip/backstage: 3 points</i> <i>Initiative proposed by production: 1 point</i>	max 5

Criterion description:

F1

COMMUNICATING SUSTAINABILITY

Requirements

To implement initiatives to promote good practices adopted in order to render the Audiovisual Work sustainable, with the aim of increasing public awareness of issues concerning environmental sustainability. Communicating sustainability initiatives may include:

- the insertion of documents attesting to the green measures taken in the film's *press kit*;
- the production of a *trailer/clip/backstage* presenting good sustainability practices adopted;
- other verifiable initiatives proposed by the production company.

Observations and suggestions

The illustrative document to be included in the *press kit* and the *trailer/clip/backstage* (the latter with moving images from the set and interviews) should briefly but effectively illustrate how the production company implemented each of the chosen actions of the *Green Film* rating system.

Verification procedure.

Document verification. Produce the original or copies of the following:

- illustrative document to be inserted in the *press-kit*; and/or
- *trailer/clip/backstage* and proof of its distribution; and/or
- other relevant document.

On-set verification. The purpose of the on-set verification conducted by the Verifying Body is to check the truthfulness of the declarations made, through the direct acquisition of information and data.

PRE-REQUISITES: SUSTAINABILITY PLAN		Points	Check
PR1	Sustainability Plan	✓	
PR2	Transport Optimization Plan	✓	
CRITERION A: ENERGY SAVING		Points	Score
A1	Temporary connections to the power distribution grid	3	
A2	Green power	3	
A3	LED lighting	3	
CRITERION B: TRANSPORT AND ACCOMMODATION		Points	Score
B1	Euro 5 vehicles	1	
B2	Euro 6, hybrid, methane, LPG and/or electric vehicles	4	
B3	Accommodation: within 10km from the set	4	
B4	Accommodation: certified accommodation facilities <i>Option 1: EMAS or European Ecolabel: 3 pts</i> <i>Option 2: ISO 14001 and other ISO 14024 certifications: 2 pts</i>	max 3	
CRITERION C: CATERING		Points	Score
C1	Drinking water <i>Option 1: local water network: 4 pts</i> <i>Option 2: Free-standing water dispensers: 3 pts</i>	max 4	
C2	Supply of meals <i>Option 1: restaurants: 4 pts</i> <i>Option 2: catering without lunch-boxes: 1 pt</i>	max 4	
C3	Reusable tableware	2	
C4	Hot beverages on-set	3	
CRITERION D: MATERIAL SELECTION		Points	Score
D1	Certified suppliers and products <i>Option 1: EMAS or European Ecolabel: 3 pts</i> <i>Option 2: ISO 14001 and other ISO 14024 certifications: 2 pts</i>	max 3	
D2	Recycled materials or materials deriving from reuse	1	
D3	Reuse of scene materials	2	
D4	Paper-based communication	1	
CRITERION E: WASTE MANAGEMENT		Points	Score
E1	Differentiated waste collection	4	
CRITERION F: COMMUNICATION		Points	Score
F1	Communicating Sustainability <i>Press kit document: 1 pt</i> <i>Trailer/clip/backstage: 3 pts</i> <i>Initiative proposed by production: 1 pt</i>	max 5	
Tot. 50			



www.green.film



Green Film has been developed in collaboration with



AGENZIA PROVINCIALE PER LA PROTEZIONE DELL'AMBIENTE

TIS engineering

Chosen by



European network of regional film funds



Italian Film Commissions

as the common tool for the certification of environmental sustainable audiovisual projects.

Partners



EUSKO JAURLARITZA



GOBIERNO VASCO

HEZKUNTZA, HIZKUNTZA POLITIKA ETA KULTURA SAILA

DEPARTAMENTO DE EDUCACION, POLITICA LINGUISTICA Y CULTURA

ZEFYR



Illustrations by [Federica Bordoni](#)